

# Backpack Sprayer

(compressor not included)

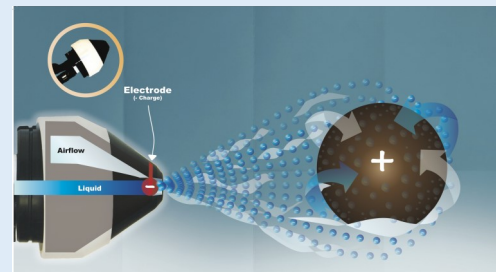
# BP

**VANCARE**<sup>®</sup>  
We move body and mind



Nozzles	1 included, see below for more options
External Air supply	Yes, (compressor not included)
CFM Required	1 nozzle 6-8 CFM (0.17-0.23 m <sup>3</sup> /min) 2 nozzle 12-16 CFM (0.34-0.45 m <sup>3</sup> /min) 3 nozzle 18-24 CFM (0.51-0.68 m <sup>3</sup> /min)
Air line pressure	60 to 70 PSI (4.2 to 4.9 kg/cm <sup>2</sup> )
Electricity Required	No
Liquid Container Type	2.5 or 4 gal. (9.5 L or 15.1 L)
Dimensions	40"H x 22"W x 42"L (1 m x 0.6 m x 1.1 m)
Hose Length	100 ft (30.5 m) air hose, standard, 300 ft (91.4 m) maximum available upon request
Weight	Empty, 7 lbs (3.2 kg) full 42 lbs. (19.1kg)
Flow rate	1 nozzle - 2-2.5 gal/hr (7.6-9.5 L/hr) 2 nozzle - 4-4.5 gal/hr. (15-17 L/hr) 3 nozzle - 5.5-6 gal/hr. (20.8-22.7 L/hr)
Spray Range	15-20 feet range (4.6-6.1 m)
Additional Options	2 and 3 headed spraygun

Ideal sprayer for small growers, greenhouses, interiorscapes, and mold remediation.



**Complete Confident Coverage**

**VANCARE, INC**

1515 1st STREET  
AURORA, NE 68818  
TEL 800.694.4525  
TEL 402.694.4525  
FAX 402.694.3994

[vancare.com](http://vancare.com)